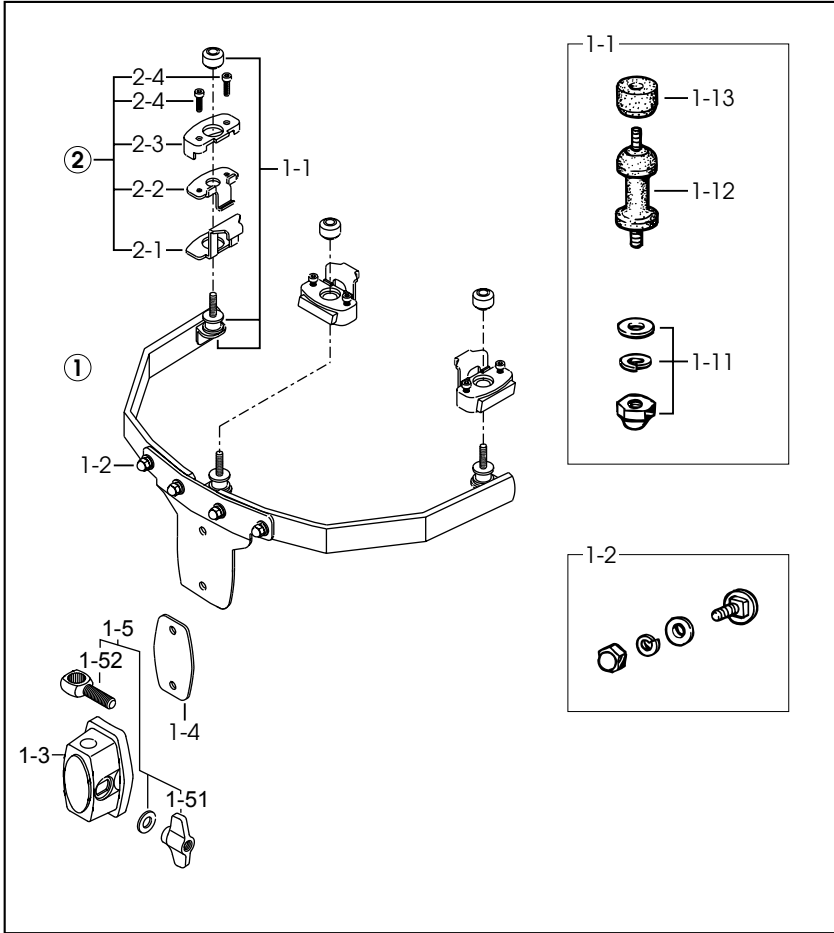


STAR-CAST MOUNTING SYSTEM HOOP GRIP TYPE



Star-Cast Mounting Unit incl. 3pcs. of Hoop Grips

Hoop Diameter	Model No.
8"	MRM8
10"	MRM10
12"	MRM12
13"	MRM13
14"	MRM14
16"	MRM16

① Star-Cast Mounting Unit w/o Hoop Grips

Hoop Diameter	Model No.
8"	MRM8-1
10"	MRM10-1
12"	MRM12-1
13"	MRM13-1
14"	MRM14-1
16"	MRM16-1

1-1 Floating unit

Hoop Diameter	Model No.
8" & 10"	MCM-50FS
12" & 13"	MCM-60FS
14" & 16"	MCM-80FS

1-11 ANT5WB Acorn hex nut w/washers

1-12 Rubber bolt

Hoop Diameter	Model No.
8" & 10"	MCM-RB50
12" & 13"	MCM-RB60
14" & 16"	MCM-RB80

1-13 MCM-RNT Rubber nut

1-2 B615ANT6WB Bolt (M6 x 15L), washer & nut assembly

1-3 MTB25E-1 Casting Only

1-4 MTB25-RP Rubber spacer

1-5 EB820WN8W Bolt (M8x20mm), washer & T-nut(M8) assembly

1-51 WN8P Wing nut (2pcs/pack)

1-52 EBA820 Eye bolt

② HPGP Hoop Grip

2-1 HPGP-1 Metal plate

2-2 HPGP-2 Metal plate

2-3 HPGP-3 Rubber cap

2-4 L415 Screw (M4 x 15L)