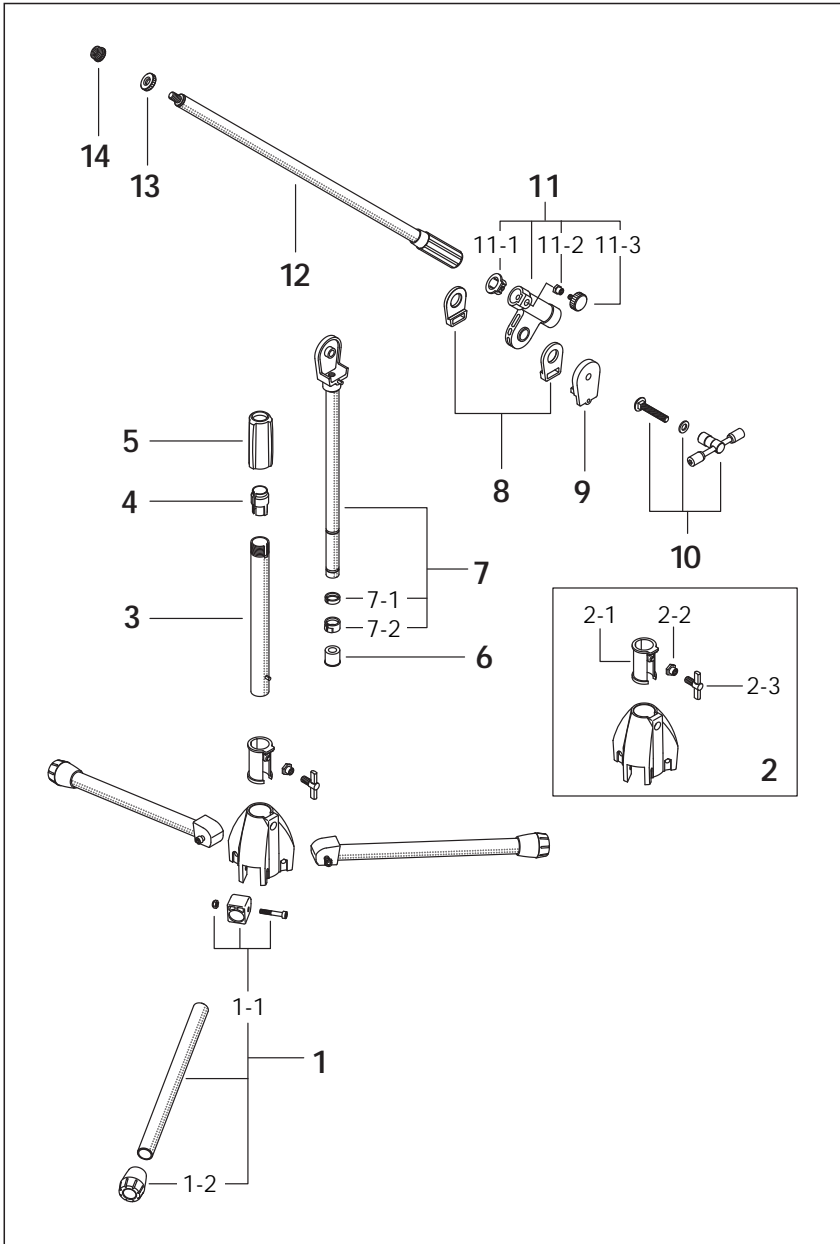


# MS205ST

# SHORT BOOM MICROPHONE STAND



- |           |                  |                               |
|-----------|------------------|-------------------------------|
| <b>1</b>  | <b>MS200-1</b>   | <b>Leg</b>                    |
| 1-1       | JBMS2            | Nylon bushing w/bolt & nut    |
| 1-2       | 205-RF           | Rubber tip                    |
| <b>2</b>  | <b>BSMS2</b>     | <b>Base Assembly</b>          |
| 2-1       | 205-NB1          | Nylon bushing for base        |
| 2-2       | IN8              | Insert nut (M8)               |
| 2-3       | 205-TB           | T-bolt (M8x14L)               |
| <b>3</b>  | <b>MS205ST-2</b> | <b>Lower pipe</b>             |
| <b>4</b>  | <b>205-PR1</b>   | <b>Plastic collar</b>         |
| <b>5</b>  | <b>205-GP</b>    | <b>Grip only</b>              |
| <b>6</b>  | <b>205-BB</b>    | <b>Rubberspacer</b>           |
| <b>7</b>  | <b>MS205ST-3</b> | <b>Upper pipe</b>             |
| 7-1       | 205-PRB          | Plastic ring                  |
| 7-2       | 205-PRA          | Plastic ring                  |
| <b>8</b>  | <b>205-RW</b>    | <b>Rubber washer (1pc)</b>    |
| <b>9</b>  | <b>205-BP</b>    | <b>Boom plate</b>             |
| <b>10</b> | <b>205-HDS</b>   | <b>Torque nut &amp; bolt</b>  |
| <b>11</b> | <b>205-BH</b>    | <b>Boom holder set</b>        |
| 11-1      | 205-NB2          | Nylon bushing for boom holder |
| 11-2      | IN6              | Insert nut (M6)               |
| 11-3      | 205-NN           | Round screw                   |
| <b>12</b> | <b>MS205ST-4</b> | <b>Boom pipe only</b>         |
| <b>13</b> | <b>205-LN</b>    | <b>Lock nut</b>               |
| <b>14</b> | <b>AD58E</b>     | <b>Adapter</b>                |